

This instrument prepared by:
LEONARD H. BAIRD, JR.
Attorney at Law
P.O. Drawer 1066
Clermont, Florida 32711
(904) 394-2114

AMENDMENT

BOOK 919 PAGE 2257

TO
DECLARATION OF CONDOMINIUM
OF
VACATION VILLAGE CONDOMINIUM

Pursuant to the provisions of Chapter 718, Florida Statutes, together with the Declaration of Condominium of Vacation Village Condominium; and pursuant to the joinder and consent of all record owners and all record lien owners, the following amendments are hereby enacted to the Declaration of Condominium of Vacation Village Condominium, as recorded in Official Record Book 653, Page 1163, Public Records of Lake County, Florida.

Section 1. Substantial re-wording of declaration. See Article 3.6 for present text. Article 3.6 is hereby amended by adding Section (c) to read as follows:

3.6. Common Elements.

- (c). Additions or Alterations. Additions made by unit owners to the shed, porch, and/or overhang as approved by the Board of Directors of the Association shall be considered limited common areas for the exclusive use of the unit owner concerned.

Section 2. Substantial re-wording of declaration. See Section 5.1(b) for present text. Section 5.1(b) is hereby amended by adding Section (4) to read as follows:

5.1 Condominium Unit.

- (b)(4). To maintain, repair and replace at his expense all such unit alterations, improvements and extensions as approved by the Association.

Section 3. Substantial re-wording of declaration. See Section 5.2(b) for present text. Section 5.2(b) is hereby amended to read as follows:

5.2 Common Elements.

- (b) Alteration and improvement. After the completion of the improvements included in the common elements contemplated by this Declaration, there shall be no alteration nor further improvements of common elements without prior approval in writing by the record owners of 2/3 of the units, provided, however, that alterations, improvements or extensions to individual units within the limited common areas may be approved by the Board of Directors of the Association.

Section 4. Substantial re-wording of declaration. See Section 3.3 for present text. Section 3.3 is hereby amended by adding Section (4) to read as follows:

3.3 Easements.

D. No. 919 PAGE 2258
BOOK

- (4). An easement shall exist for individual unit owners over such portions of the common areas or limited common areas as extensions or modifications or alterations are made by individual unit owners as approved by the Association for the exclusive use of the unit owner concerned.

Dated this 10th day of April, 1987.

VACATION VILLAGE CONDOMINIUM
ASSOCIATION, INC.

By: Thomas Liddell
President

ATTEST:

Jane M. McClintock
Secretary

STATE OF FLORIDA

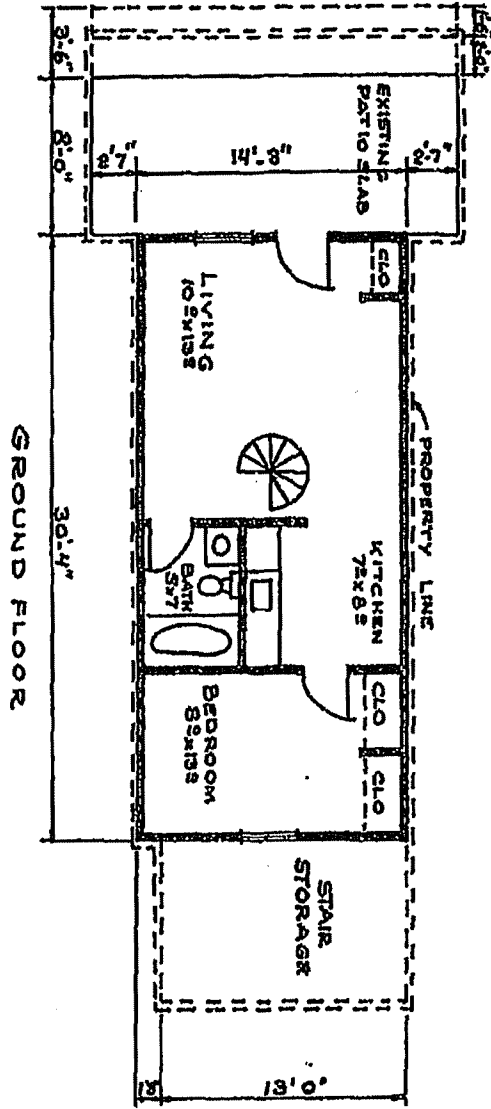
COUNTY OF LAKE

I HEREBY CERTIFY that on this day, before me, an officer duly authorized in the State aforesaid and in the County aforesaid, to take acknowledgments, personally appeared THOMAS Liddell as President and JANE McClintock as Secretary of VACATION VILLAGE CONDOMINIUM ASSOCIATION, INC., a Florida non-profit corporation, to me known to be the persons described in and who executed the foregoing instrument and they acknowledged before me that they executed the same.

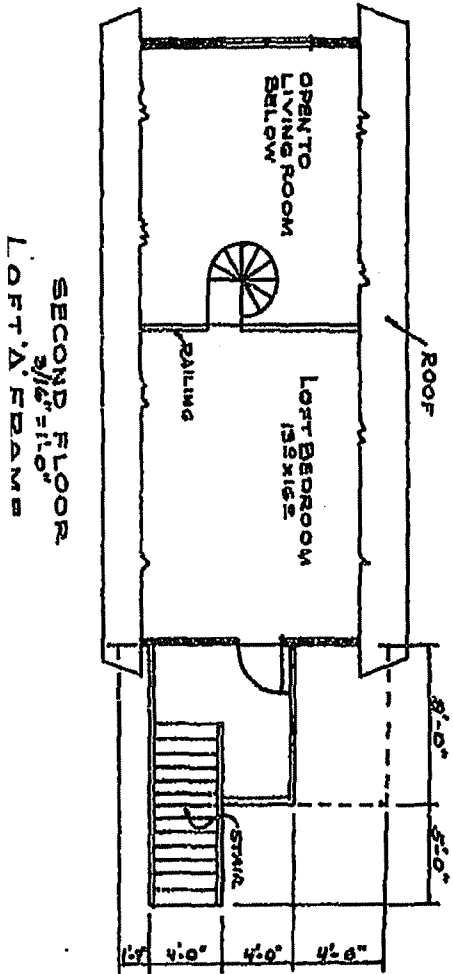
WITNESS my hand and official seal in the County and State last aforesaid this 10th day of April, 1987.

Mary Frankie Register
Notary Public

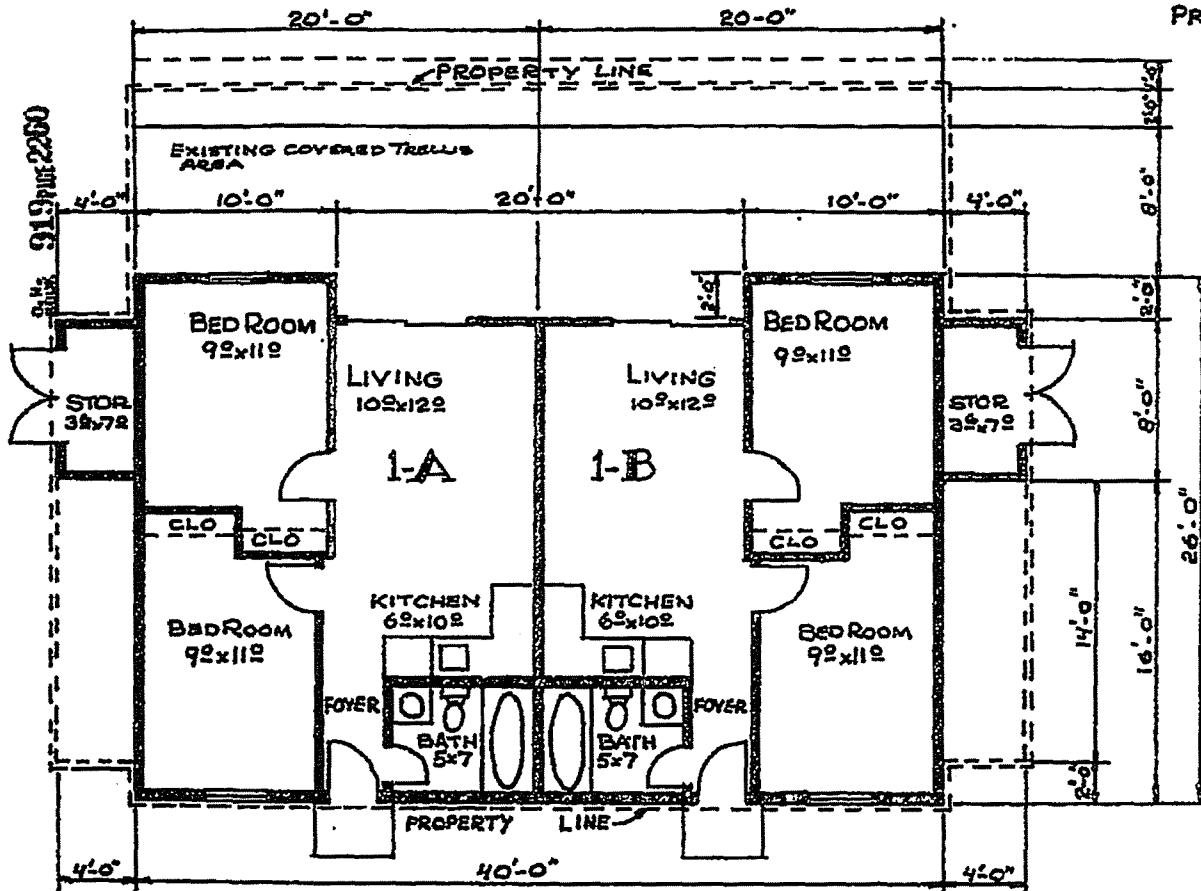
My Commission Expires:



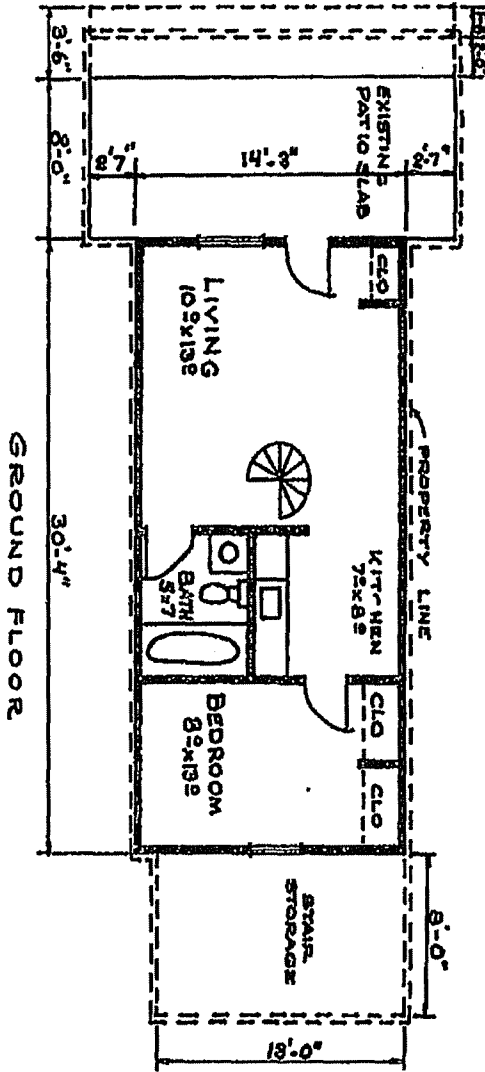
DECLARATION EXHIBIT D-12
PROSPECTUS EXHIBIT-GA-1



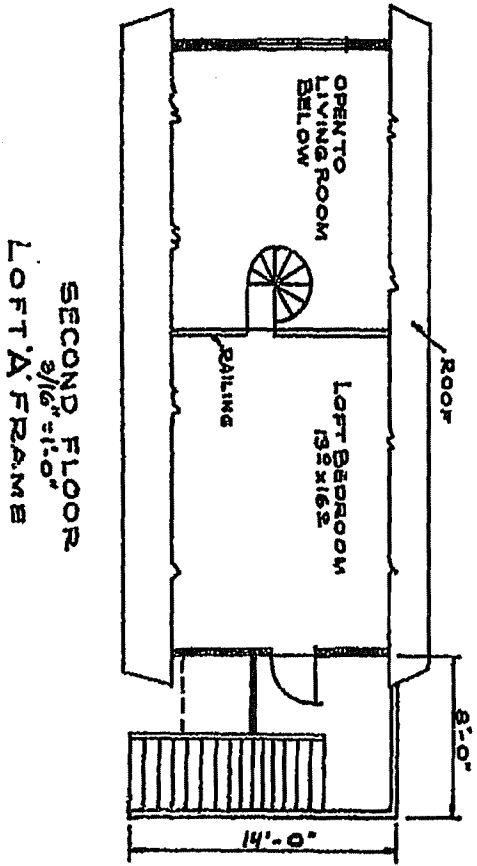
DECLARATION EXHIBIT - D-2a
PROSPECTUS EXHIBIT - 6B-1

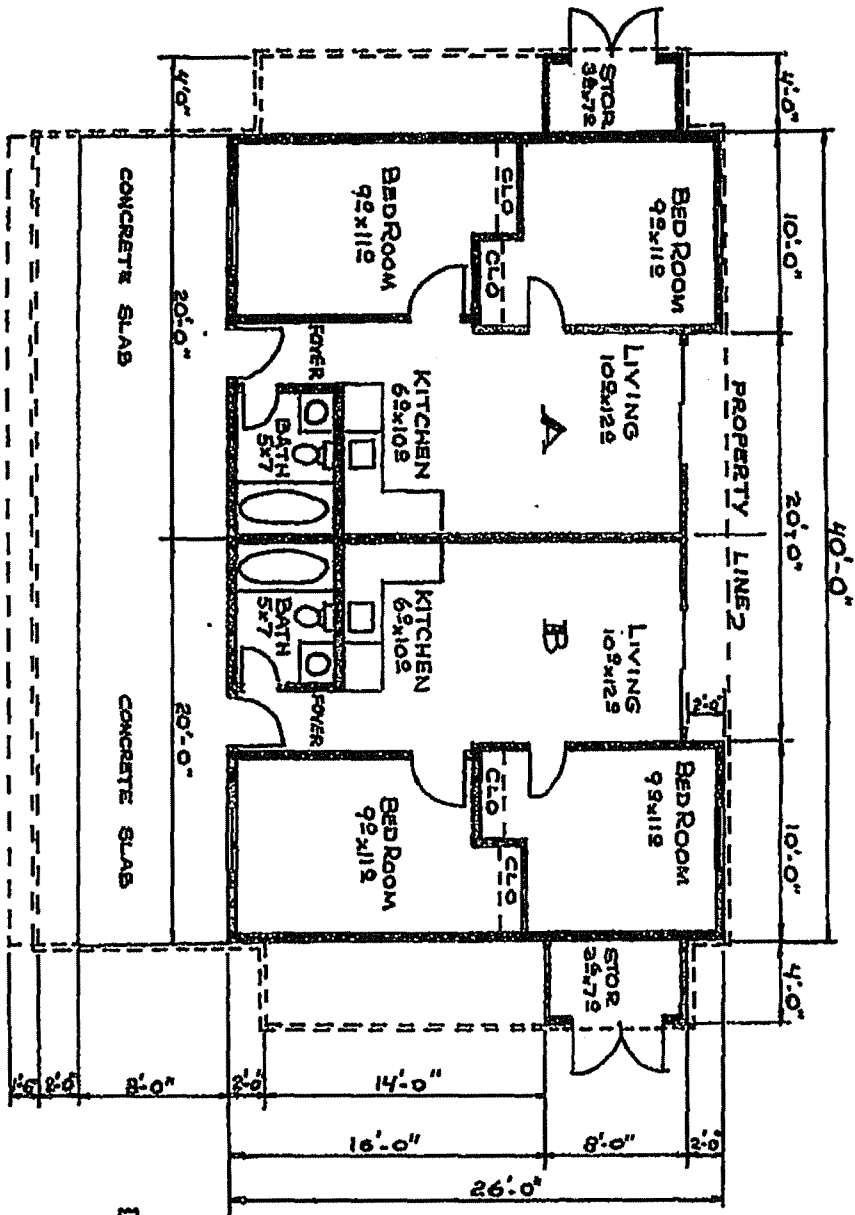


DUPLEX FLOOR PLAN
3/16" = 1'-0"



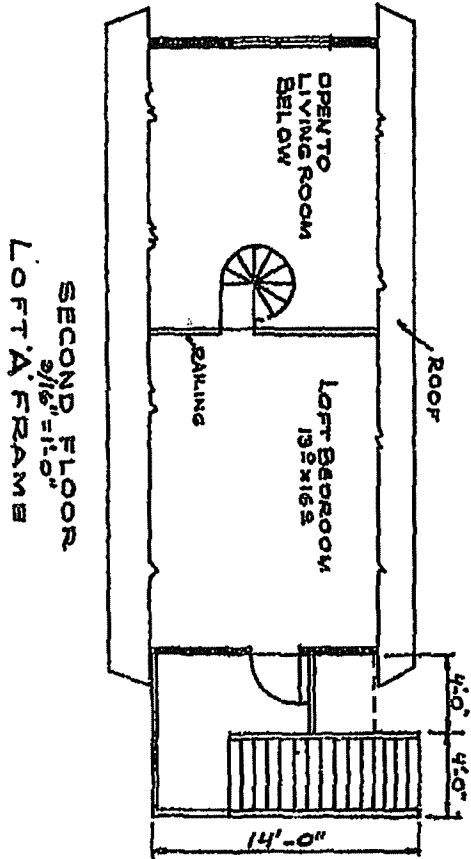
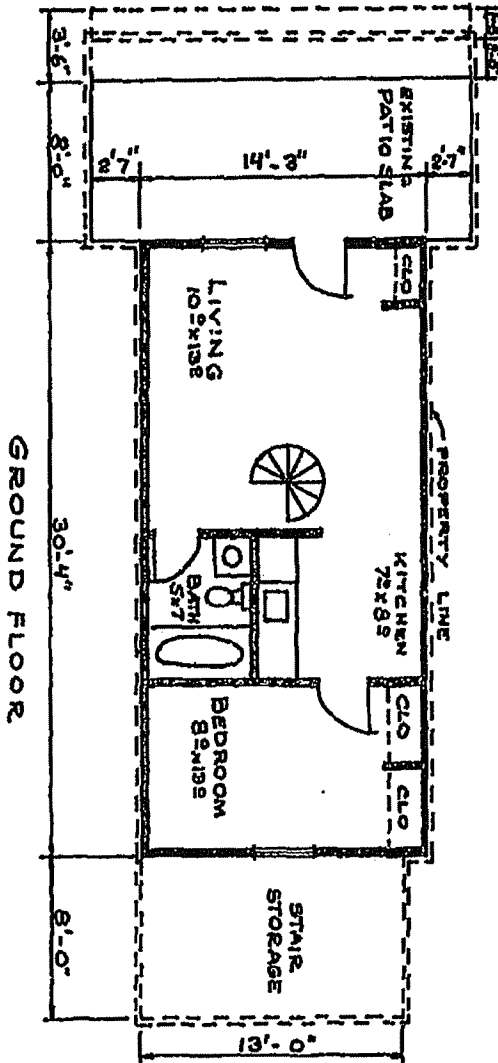
DECLARATION EXHIBIT D-15
PROSPECTUS EXHIBIT-6A-2



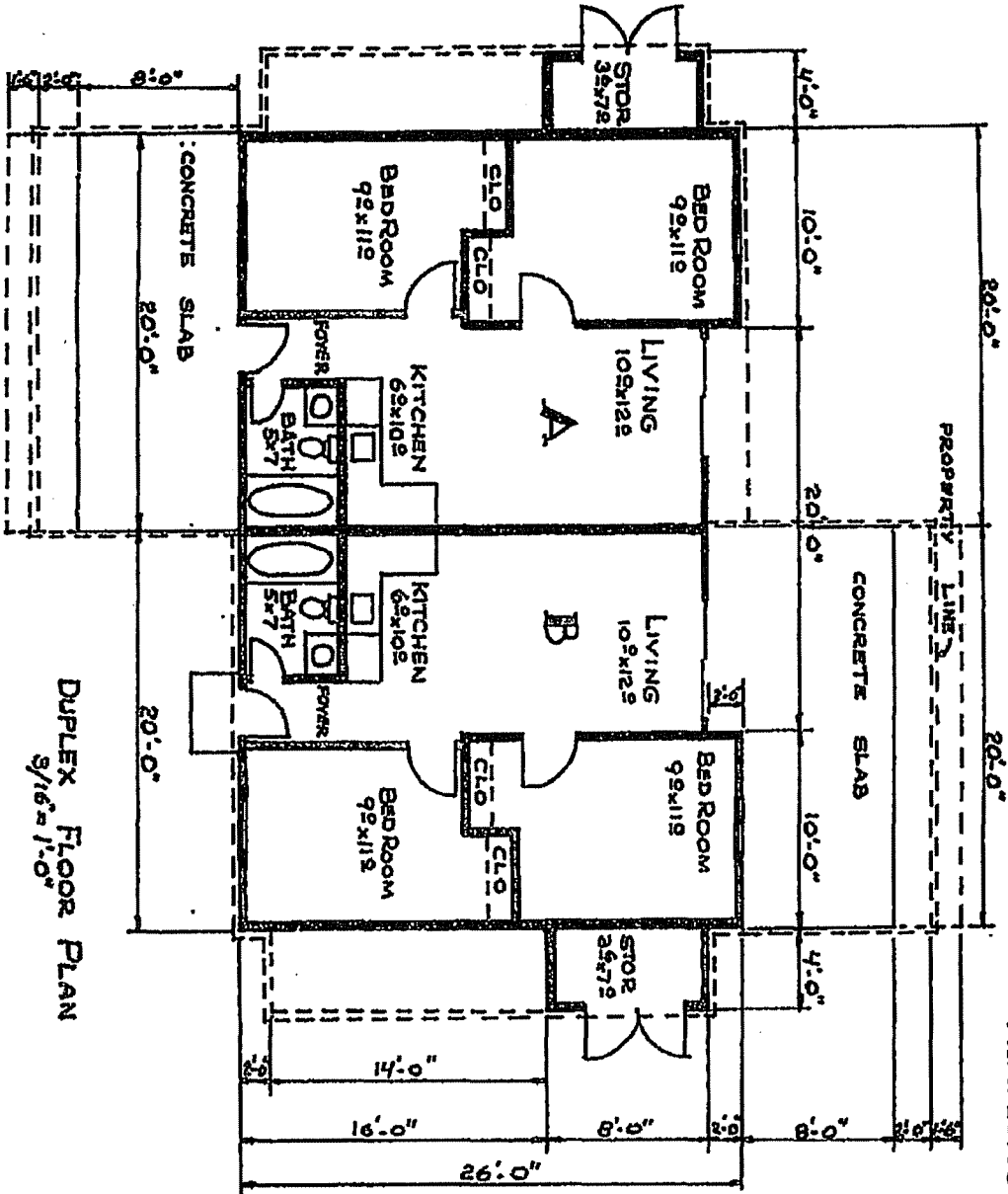


DECLARATION EXHIBIT - D-2b
PROSPECTUS EXHIBIT - 6B-2

DUPLEX FLOOR PLAN
3/16" = 1'-0"

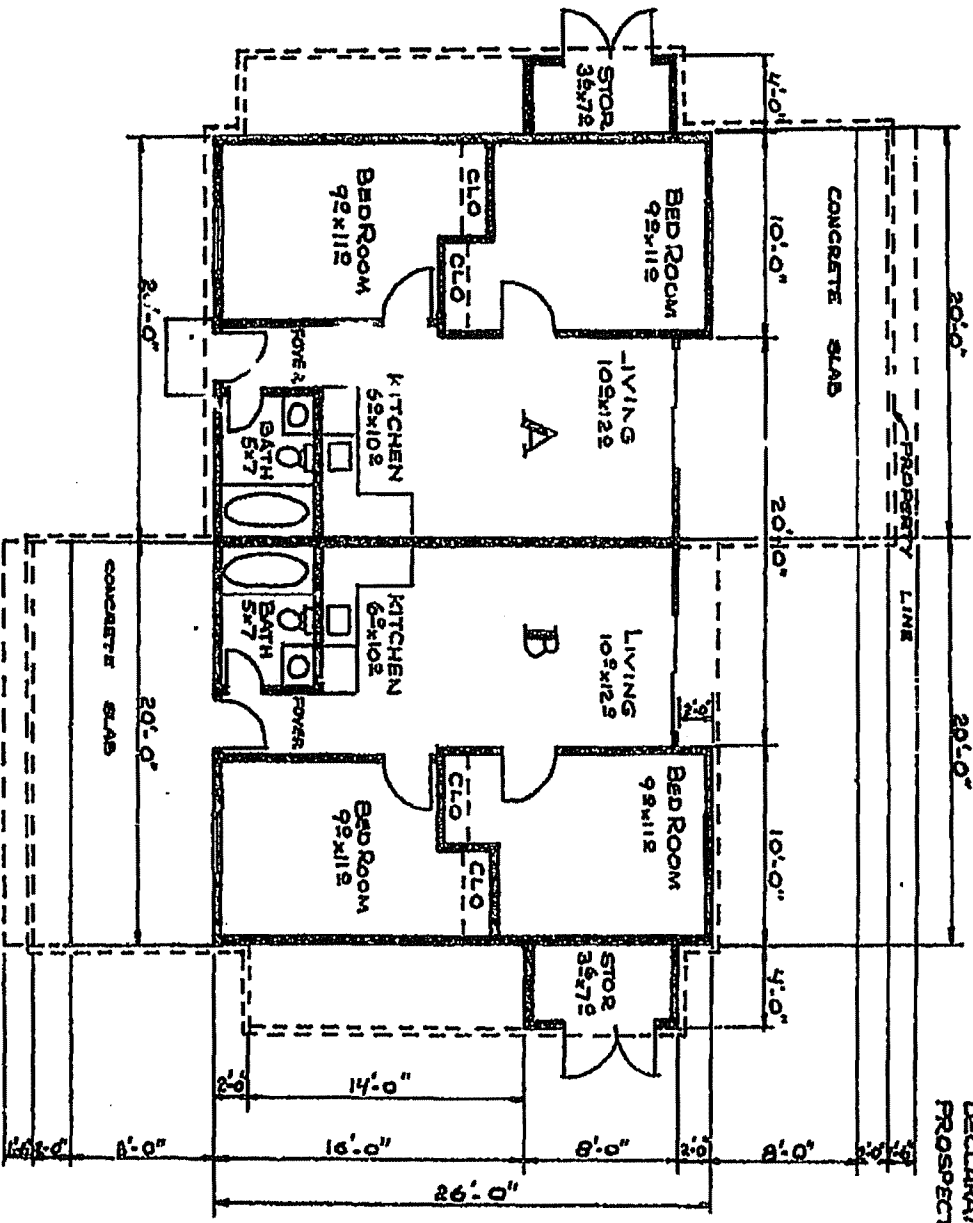


DECLARATION EXHIBIT D-1c
PROSPECTUS EXHIBIT-GA-3



DUPLEX FLOOR PLAN
3/16" = 1'-0"

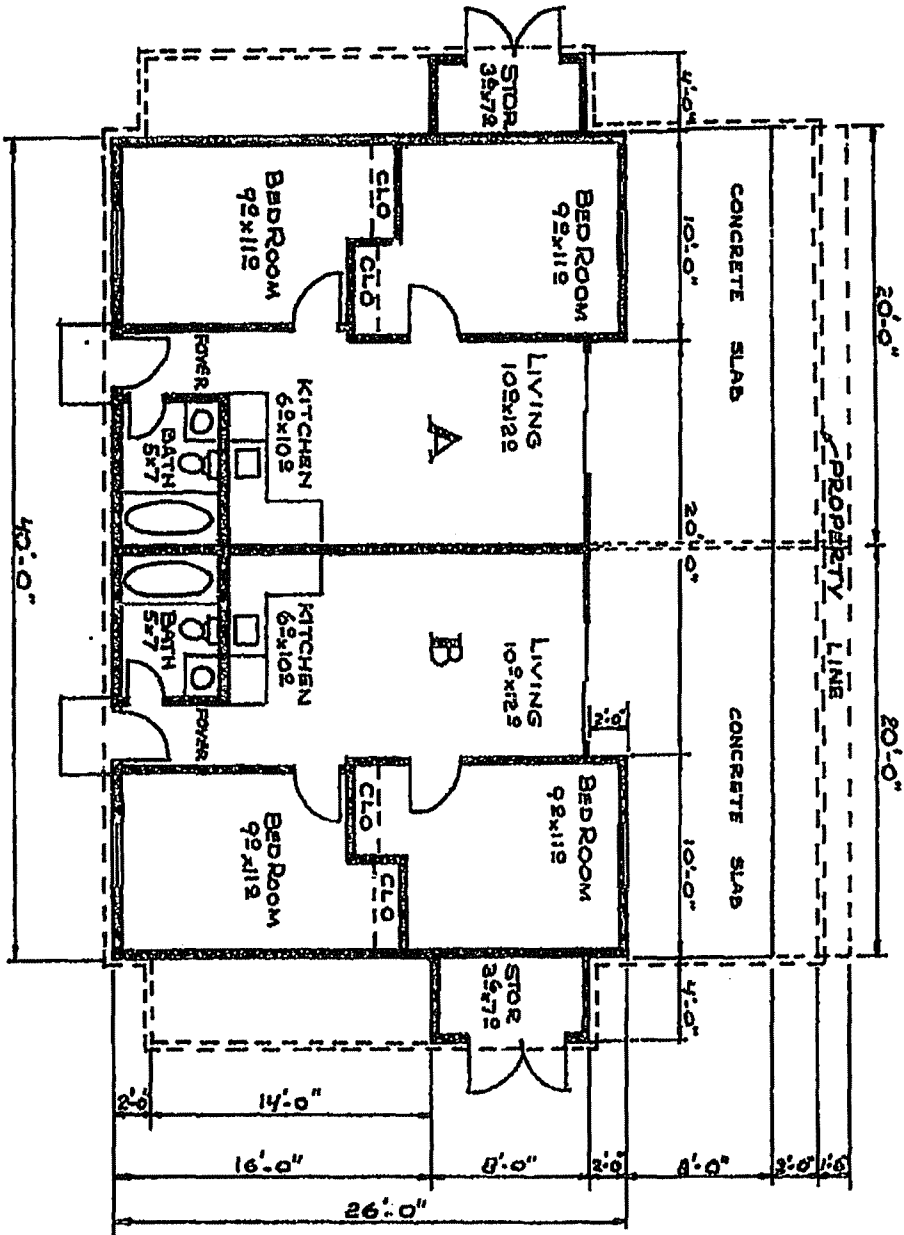
DECLARATION EXHIBIT - D-2c
PROSPECTUS EXHIBIT - 6B-3



DECLARATION EXHIBIT - D-2d
PROSPECTUS EXHIBIT - 6B-4

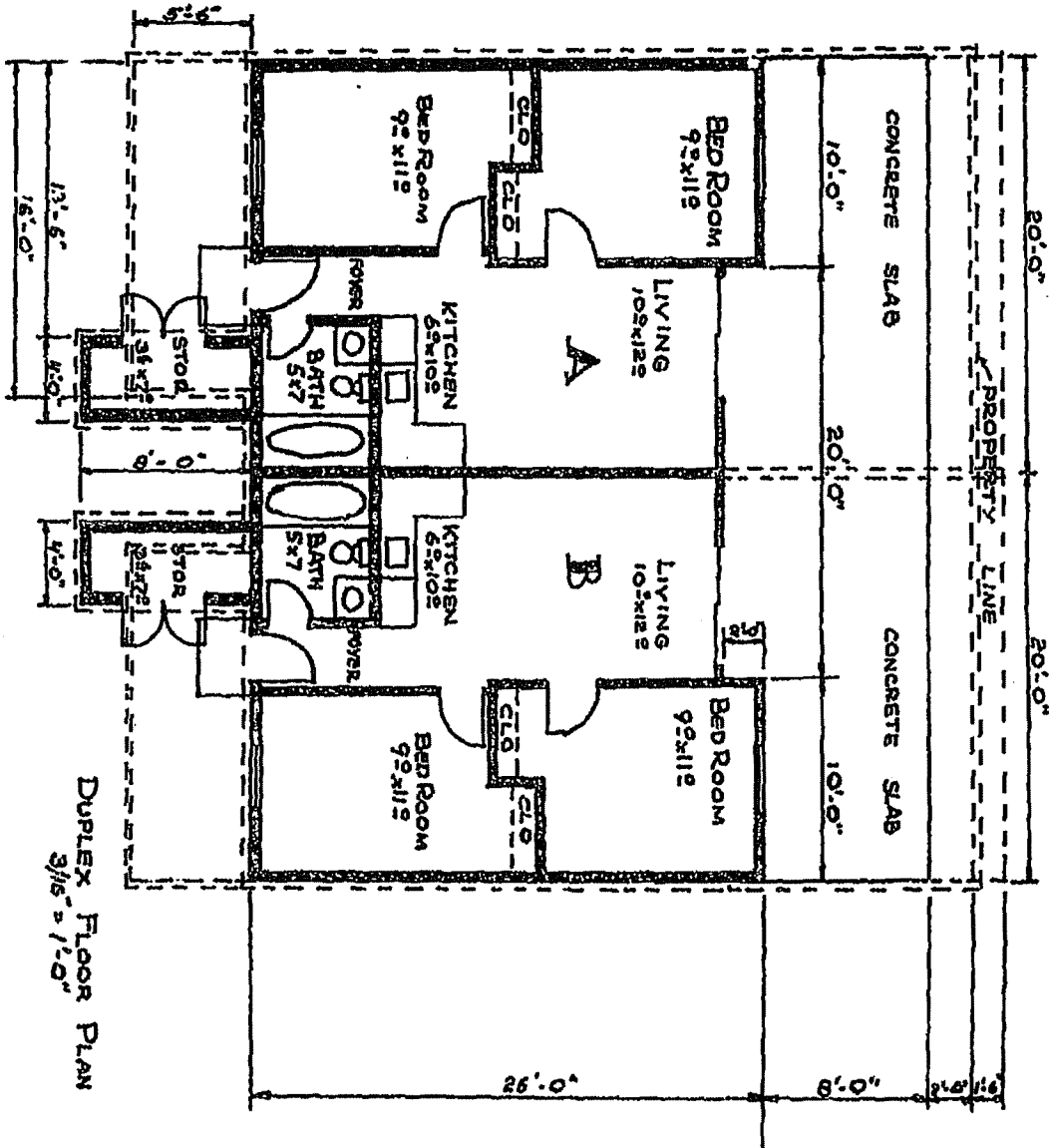
DUPLEX FLOOR PLAN
3/16" = 1'-0"

913-2266



DUPLEX FLOOR PLAN
3/8" = 1'-0"

DECLARATION EXHIBIT - D-7e
PROSPECTUS EXHIBIT - 6B 5



DUPLEX FLOOR PLAN
3/16" = 1'-0"

DECLARATION EXHIBIT - D-2P
PROSPECTUS EXHIBIT - 6B-6